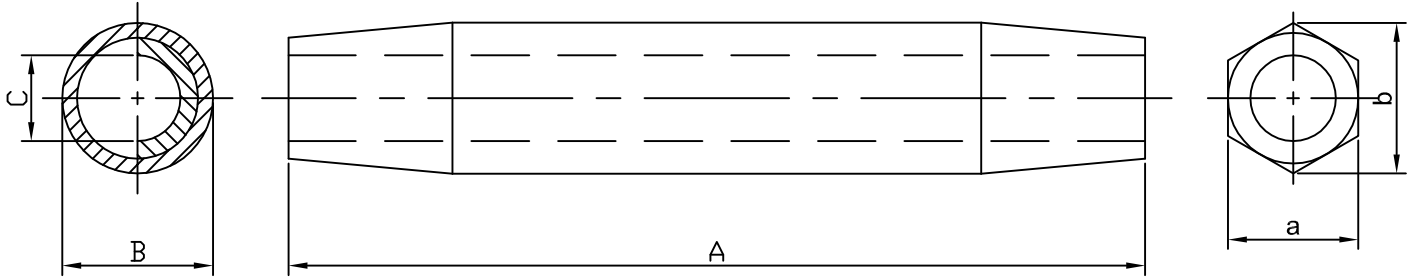


TUBULAR REPAIR SLEEVE.



BEFORE
COMP.

AFTER
COMP.

Sr. No.	CONDUCTOR	A	B	C	a	b
1	AL-59.	305	54	34	*	*

* TO BE FURNISHED BY BIDDER.

NOTES:-

- 1 - ALL DIMENSIONS ARE IN MM.
- 2 - DIMENSIONS NOT TO SCALE.
- 3 - GEN. TOL. AS PER IS.
- 6 - IS: 2121 & IS: 2486.

1	ALLUMINIUM SLEEVE	2 pc.	ALLUMINIUM
SR. NO.	DESCRIPTION	QTY.	SPECIFICATION

TENDER PURPOSE			
GUJARAT ENERGY TRANSMISSION CORPN.LTD. S.P.VIDYUT BHAVAN, RACE COURSE, VADODARA - 390 007			
REPAIR SLEEVE FOR AL-59			
DRAWN:	CHECKED:	APPD:	SIZE: A3
SCALE:	DATE:	DRG. NO: GETCO / E / 2L-STD / AL59-RS/ 006	SHEET: REV: 1 OF 1 R0